

FUNKISKÖK

Handmade kitchen cabinets in solid wood



CATALOGUE





FUNKISKÖK

Handmade kitchen cabinets in solid wood

We have created the kitchen ranges ORIGINAL, MODUL and MODERN in the timeless and modern style that expresses simplicity and raw structure that emerged with introduction of functionalism in Swedish architecture.

Our kitchen frames, shelves and drawers are crafted using Swedish Norrland pine. Cabinet doors are built from either solid pine blockboard, HDF or classic solid pine framing. All drawers run on top quality soft close slides and the majority of our fittings are manufactured here in Sweden.

All cabinets are made to order with one or two carpenters tasked with installing your kitchen. This way of working, we believe, allows us to keep the joy and love in our craftsmanship for each and every kitchen we deliver.

Tradition / Quality / Craftmanship

Solid wood is a fantastic natural resource. It ages beautifully and wear and damage that arises over the years is easy to fix, restore or live with. Kitchen furnishings with solid wood frames have a lifespan of several generations making them both an environmentally friendly and sustainable solution.



Materials



The term sustainable development calls for taking care of earth's resources. In the late '80s the UN published a report titled "Our Common Future" that established that "development that meets the needs of the present without compromising the ability of future generations to meet their own needs." Sustainability is more important than ever, and it is for this reason we construct all of our kitchens here in Sweden. Our kitchens have a long lifespan, allow for renovation and are free from unwanted bi-products.

Locally produced kitchens





With our ORIGINAL, MODUL and MODERN ranges you can complement your existing kitchen or create a completely new one. All cabinets are made to order and specified measure. You can find all our cabinets further along in this catalog or on our website www.funkiskok.se.

Our planning and build process allows us to easily turn out suitable fillers and plinths for your furnishings ensuring your cabinets adapt to your existing architecture.

The product

ORIGINAL

Funkiskök ORIGINAL has its origin in traditional Swedish kitchen construction. Cabinets doors are partially overlaid with a small bevel and are fitted with nickel plated, rebated hinges manufactured by Eskilstuna Kulturbeslag. The frame is made out of solid 20mm pine. Shelves have chamfered edges and rest on a movable screw mounted holding strip. Drawers are constructed in solid 15mm pine and run on top quality soft close slides. Drawer handles are sourced from Eskilstuna Kulturbeslag.





Overview ORIGINAL

Base cabinet



BF400L1S
W: 400 mm.
D: 585 mm.
H: 870 mm.



BF400SL1S
W: 400 mm.
D: 585 mm.
H: 870 mm.



BF400L3
B: 400 mm.
D: 585 mm.
H: 870 mm.



BF400SL5
W: 400 mm.
D: 585 mm.
H: 870 mm.



BF400L5
W: 400 mm.
D: 585 mm.
H: 870 mm.



BF600L3
W: 600 mm.
D: 585 mm.
H: 870 mm.



BF200
W: 200 mm.
D: 585 mm.
H: 870 mm.



BF400
W: 400 mm.
D: 585 mm.
H: 870 mm.



BF600
W: 600 mm.
D: 585 mm.
H: 870 mm.

Overview ORIGINAL

Base cabinet



BF600U
W: 600 mm.
D: 585 mm.
H: 870 mm.



BF800
W: 800 mm.
D: 585 mm.
H: 870 mm.



BF1200
W: 1200 mm.
D: 585 mm.
H: 870 mm.



BF400L1SS
W: 400 mm.
D: 385 mm.
H: 870 mm.



BF800S
W: 800 mm.
D: 385 mm.
H: 870 mm.



DISHWASHER PANEL 450
W: 445 mm.
H: 747 mm.
Thickness: 19 mm.



DISHWASHER PANEL 595
W: 595 mm.
H: 747 mm.
Thickness: 19 mm.

Overview ORIGINAL

Wall cabinet



OF400
W: 400mm.
D: 315 mm.
H: 900 mm.



OF800
W: 800 mm.
D: 315 mm.
H: 900 mm.



OF600
W: 600 mm.
D: 315 mm.
H: 900 mm.



OF600F
W: 600 mm.
D: 315 mm.
H: 700 mm.



OF800SPECIAL
W: 800 mm.
D: 315 mm topp och 215 mm botten.
H: 900 mm.



OF400D
W: 400mm.
D: 315 mm.
H: 300 mm.



OF800D
W: 800 mm.
D: 315 mm.
H: 300 mm.



OF400S
W: 400mm.
D: 215 mm.
H: 300 mm.



OF800S
W: 800 mm.
D: 215 mm.
H: 300 mm.

Overview ORIGINAL

Wall cabinet



OF400HS
W: 400 mm.
D: 215 mm.
H: 300 mm.



OF600HS
W: 600 mm.
D: 215 mm.
H: 300 mm.



OF800HS
W: 800 mm.
D: 215 mm.
H: 300 mm.



The frame is built of 20mm solid pine. All shelves sit on screw mounted holding strips. All drawers are built of 15mm solid pine with a 7mm plywood bottom.

Overview ORIGINAL

High cabinets



HF2000K
W: 600 mm.
D: 600 mm.
H: 2000 mm.



HF2000
W: 600 mm.
D: 600 mm.
H: 2000 mm.



HF1800/4
W: 400 mm.
D: 600 mm.
H: 2000 mm.



HF300
W: 600 mm.
D: 600 mm.
H: 300 mm.



HF300/4
W: 400 mm.
D: 600 mm.
H: 500 mm.



HF500
W: 600 mm.
D: 600 mm.
H: 500 mm.



HF500/4
W: 400 mm.
D: 600 mm.
H: 500 mm.



HF600
W: 600 mm.
D: 600 mm.
H: 600 mm.



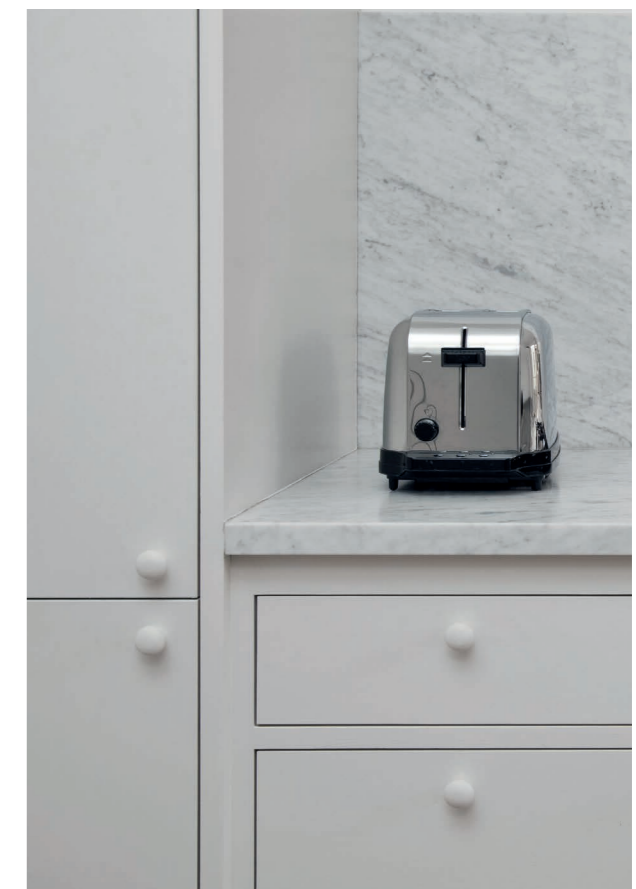
HF600/4
W: 400 mm.
D: 600 mm.
H: 600 mm.

We are resellers for a host of companies in the kitchen industry; Franke kitchen sinks and waste disposals, Purus sinks, FMMatsson-Mora-Damixa, LG-Collection counter tops, Consentino stone tiles, H-Svensson AB stone tiles and many more. Feel free to contact us for pricing proposals according to your needs.

MODUL

Our MODUL range is a timeless furnishing suitable for both modern and traditional architecture. A selection of fittings allows you to decide yourself how MODUL integrates into your existing environment. As with all our kitchens, the frame, shelves and doors are made of solid pine, the doors are fitted with plywood front and backing. Top quality hinges are concealed on the backside. The shelves have a straight edge and are held in place by movable screw mounted holding strips. Drawers are constructed in solid 15mm pine and run on top quality soft close slides.





Overview MODUL

Base cabinet



BM400L1
W: 400 mm.
D: 585 mm.
H: 870 mm.



BM 400L1S
W:400 mm.
D:385 mm.
H:870 mm.



BM400L3
W:400 mm.
D:585 mm.
H:870 mm.



BM400
W:400 mm.
D:585 mm.
H:870 mm.



BM600
W:600 mm.
D:585 mm.
H:870 mm.



BM600L3
W:600 mm.
D:585 mm.
H:870 mm.



BM600U
W:600 mm.
D:585 mm.
H:870 mm.



BM800
W:800 mm.
D:585 mm.
H:870 mm.



BM800S
W:800 mm.
D:385 mm.
H:870 mm.

Overview MODUL

Base cabinet



BM1200
W:1200 mm.
D:585 mm.
H:870 mm.



BM200
W:200 mm.
D:585 mm.
H:870 mm.



450D
W:445 mm.
D:19 mm.
H:747 mm.



600D
W:595 mm.
D:19 mm.
H:747 mm.



All drawers run on top quality soft close slides. Doors are mounted with nickel plated hinges.

Overview MODUL

Wall cabinet



OM400
W:400 mm.
D:315 mm.
H:900 mm.



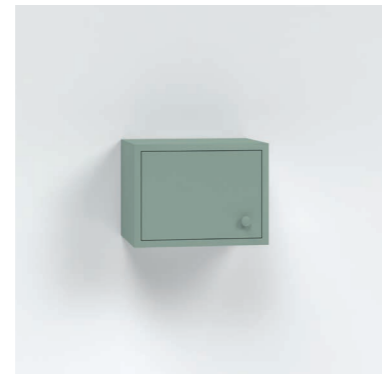
OM800
W:800 mm.
D:315 mm.
H:900 mm.



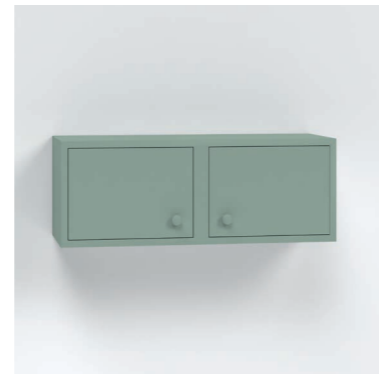
OM600
W:600 mm.
D:315 mm.
H:900 mm.



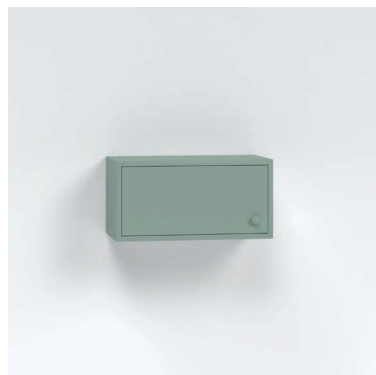
OM600F
W:600 mm.
D:315 mm.
H:700 mm.



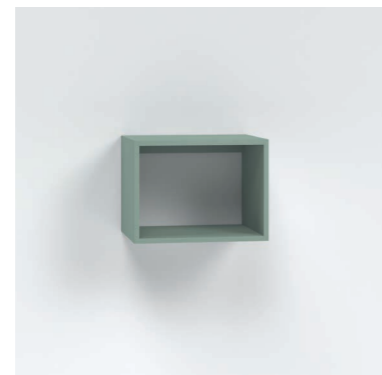
OM400D
W:400 mm.
D:315 mm.
H:300 mm.



OM800D
W:800 mm.
D:315 mm.
H:300 mm.



OM600D
W:600 mm.
D:315 mm.
H:300 mm.



OM400HD
W:400 mm.
D:315 mm.
H:300 mm.



OM800HD
W:800 mm.
D:315 mm.
H:300 mm.



OM800HD
W:800 mm.
D:315 mm.
H:300 mm.

Overview MODUL

Wall cabinet



The frame is built of 20mm solid pine. All shelves sit on screw mounted holding strips. All drawers are built of 15mm solid pine with a 7mm plywood bottom.

Overview MODUL

High cabinets



HM2000K
W:640 mm.
D:600 mm.
H:2000 mm.



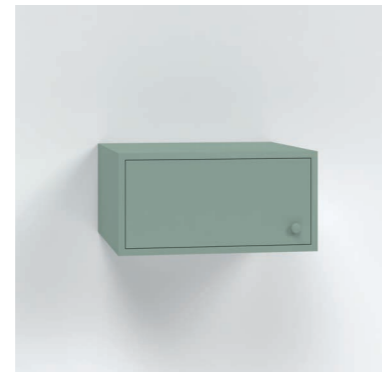
HM2000
W:600 mm.
D:600 mm.
H:2000 mm.



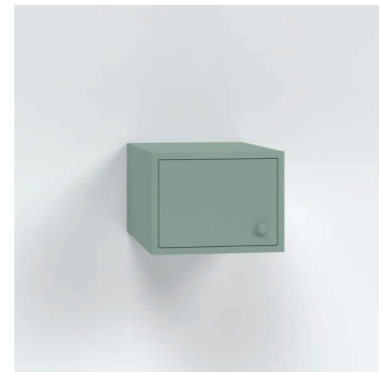
HM2000/4
W:400 mm.
D:600 mm.
H:2000 mm.



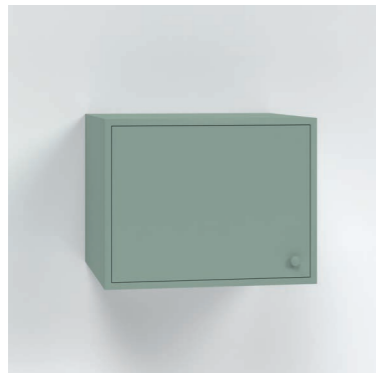
HM300K
W:640 mm.
D:600 mm.
H:300 mm.



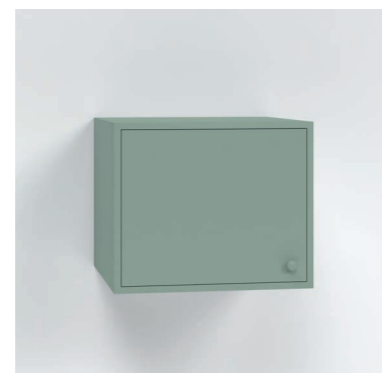
HM300
W:600 mm.
D:600 mm.
H:300 mm.



HM300/4
W:400 mm.
D:600 mm.
H:300 mm.



HM500K
W:640 mm.
D:600 mm.
H:500 mm.



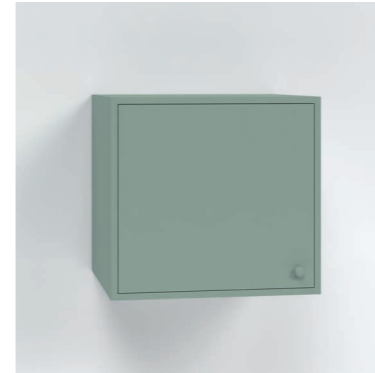
HM500
W:600 mm.
D:600 mm.
H:500 mm.



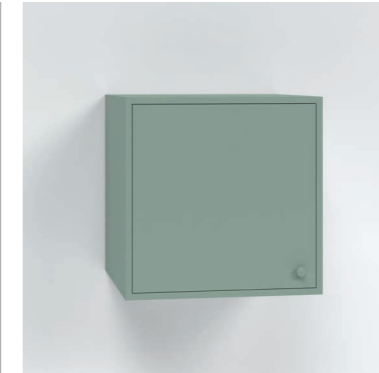
HM500/4
W:400 mm.
Dp:600 mm.
H:500 mm.

Overview MODUL

High cabinets



HM600K
W:640 mm.
D:600 mm.
H:600 mm.



HM600
W:600 mm.
D:600 mm.
H:600 mm.



HM600/4
W:400 mm.
D:600 mm.
H:600 mm.



The HM200K cabinet can be fitted with a built-in/integrated refrigerator and freezer.

MODERN

MODERN is a timeless kitchen furnishing based on our ORIGINAL cabinets. The overlayed cabinet and drawer fronts have been given a straighter profile and the same color. A selection of fittings gives you a wide array of customization options. As with all our kitchens, the frame and shelves are made from solid pine. Panels and drawer fronts have classic pine framing. Hinges are nickel plated and rebated with a classic look. Shelves have a small, 3mm chamfered edge and are held in place by movable screw mounted holding strips. Drawers are constructed of solid 15mm pine and run on top quality soft close slides.





Overview MODERN

Base cabinet



BMD 400L1
W:400 mm.
D:585 mm.
H:870 mm.



BMD 400L3
W:400 mm.
D:585 mm.
H:870 mm.



BMD 400L5
W:400 mm.
D:585 mm.
H:870 mm.



BMD 600L3
W:600 mm.
D:585 mm.
H:870 mm.



BMD 200
W:200 mm.
D:585 mm.
H:870 mm.



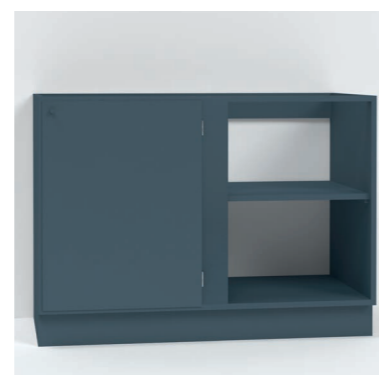
BMD 600
W:600 mm.
D:585 mm.
H:870 mm.



BMD 600U
W:600 mm.
D:585 mm.
H:870 mm.



BMD 800
W:800 mm.
D:585 mm.
H:870 mm.



BMD 1200
W:1200 mm.
D:585 mm.
H:870 mm.

Overview MODERN

Base cabinet



BMD 400L1S
W:400 mm.
D:385 mm.
H:870 mm.



BMD 800S
W:800 mm.
D:385 mm.
H:870 mm.



450D
W:445 mm.
D:19 mm.
H:747 mm.



600D
W:595 mm.
D:19 mm.
H:747 mm.



Cabinet doors and drawer fronts are cut from solid pine blockboard with HDF backing. All drawers run on top quality soft close slides. Doors are mounted with nickel plated hinges.

Overview MODERN

Base cabinet



OMD400
W:400 mm.
D:315 mm.
H:900 mm.



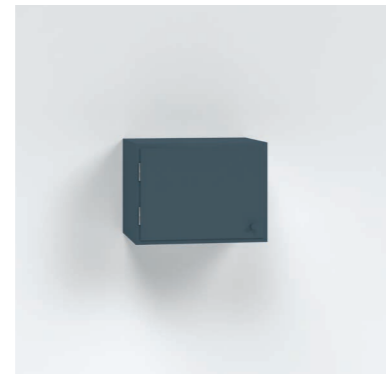
OMD800
W:800 mm.
D:315 mm.
H:900 mm.



OMD600
W:600 mm.
D:315 mm.
H:900 mm.



OMD600F
W:600 mm.
D:315 mm.
H:700 mm.



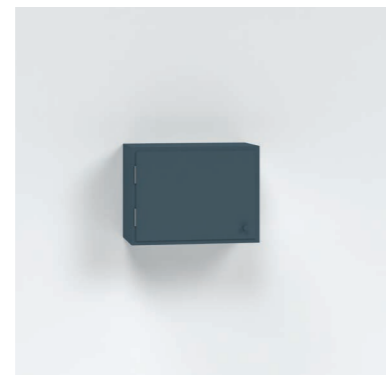
OMD400D
W:400 mm.
D:315 mm.
H:300 mm.



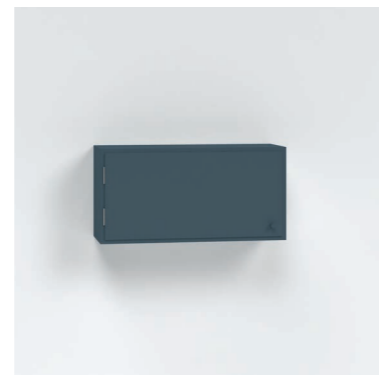
OMD600D
W:600 mm.
D:315 mm.
H:300 mm.



OMD800D
W:800 mm.
D:315 mm.
H:300 mm.



OMD400S
W:400 mm.
D:315 mm.
H:300 mm.



OMD600S
W:600 mm.
D:315 mm.
H:300 mm.

Overview MODERN

Base cabinet



OMD800S
W:800 mm.
D:315 mm.
H:300 mm.



OMD400HS
W:400 mm.
D:315 mm.
H:300 mm.



OMD600HS
W:600 mm.
D:315 mm.
H:300 mm.



OMD800HS
W:800 mm.
Dp:315 mm.
H:300 mm.



The frame is built of 20mm solid pine. All shelves sit on screw mounted holding strips. All drawers are built of 15mm solid pine with a 7mm plywood bottom.

Overview MODERN

High cabinets



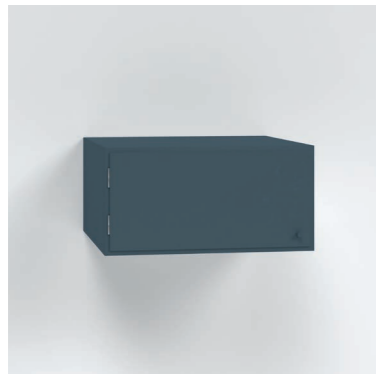
HMD2000K
W:600 mm.
D:600 mm.
H:2000 mm.



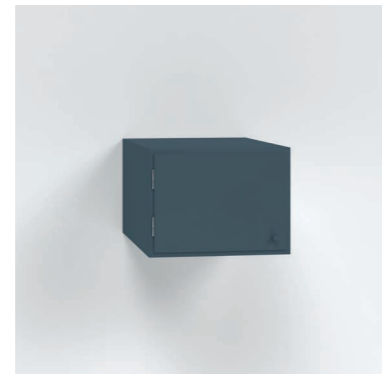
HMD2000
W:600 mm.
D:600 mm.
H:2000 mm.



HMD2000/4
W:400 mm.
D:600 mm.
H:2000 mm.



HMD300
W:600 mm.
D:600 mm.
H:300 mm.



HMD300/4
W:400 mm.
D:600 mm.
H:300 mm.



HMD500
W:600 mm.
D:600 mm.
H:500 mm.



HMD500/4
W:400 mm.
D:600 mm.
H:500 mm.



HMD600
W:600 mm.
D:600 mm.
H:600 mm.



HMD600/4
W:400 mm.
D:600 mm.
H:600 mm.



www.funkiskok.se
Storgatan 28, 211 42 Malmö
+46 708 88 64 40